



Bridge Design Details 9.7 January 2023

Soffit Reinforcement (Skews > 20°)

At the junction of the bottom slab and end diaphragm of seat-type abutments, for skews greater than 20°, rebar clearance problems may be encountered. The slab thickness may not be adequate to accommodate the “stacking” of longitudinal and transverse slab bars, diaphragm stirrups, and diaphragm bottom bars.

Use in conjunction with *Bridge Design Details: 8.8 Typical Transverse Reinforcement* and *Bridge Design Details: 14.5 Level Abutment Seat*.

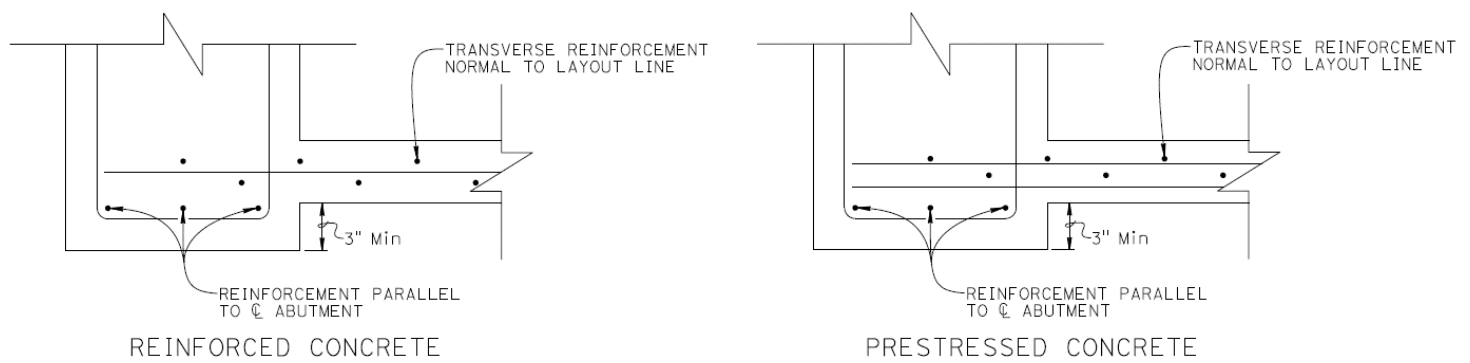


Figure 9.7.1 Drop Diaphragm Alternative

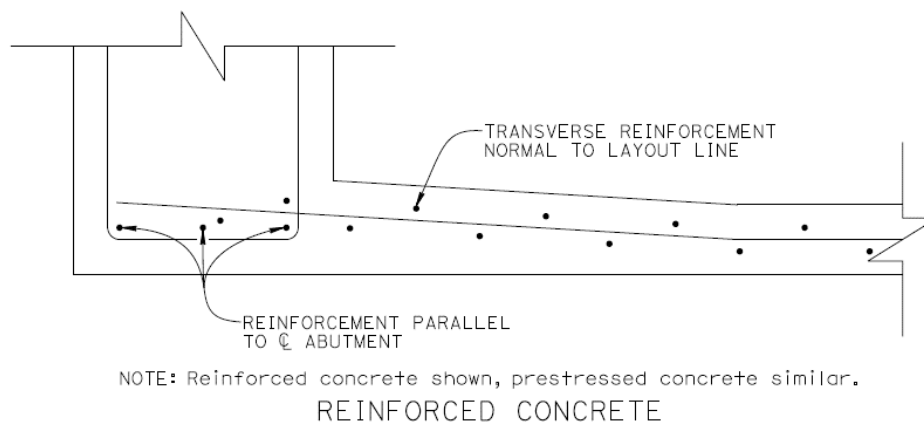


Figure 9.7.2 Flared Soffit Alternative