

Dist	COUNTY	ROUTE	POST MILES TOTAL PROJECT	SHEET No.	TOTAL SHEETS
				X	

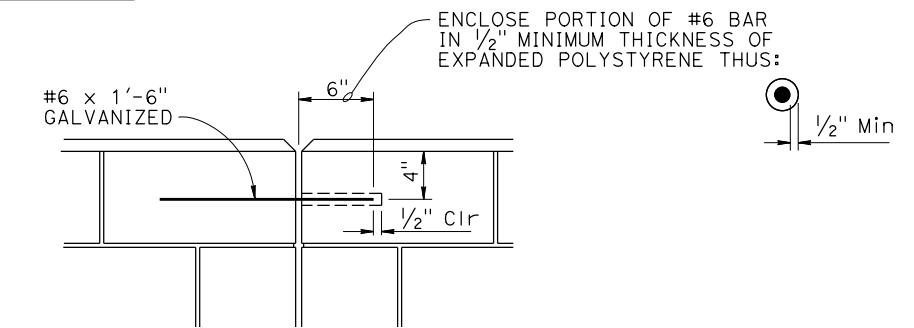
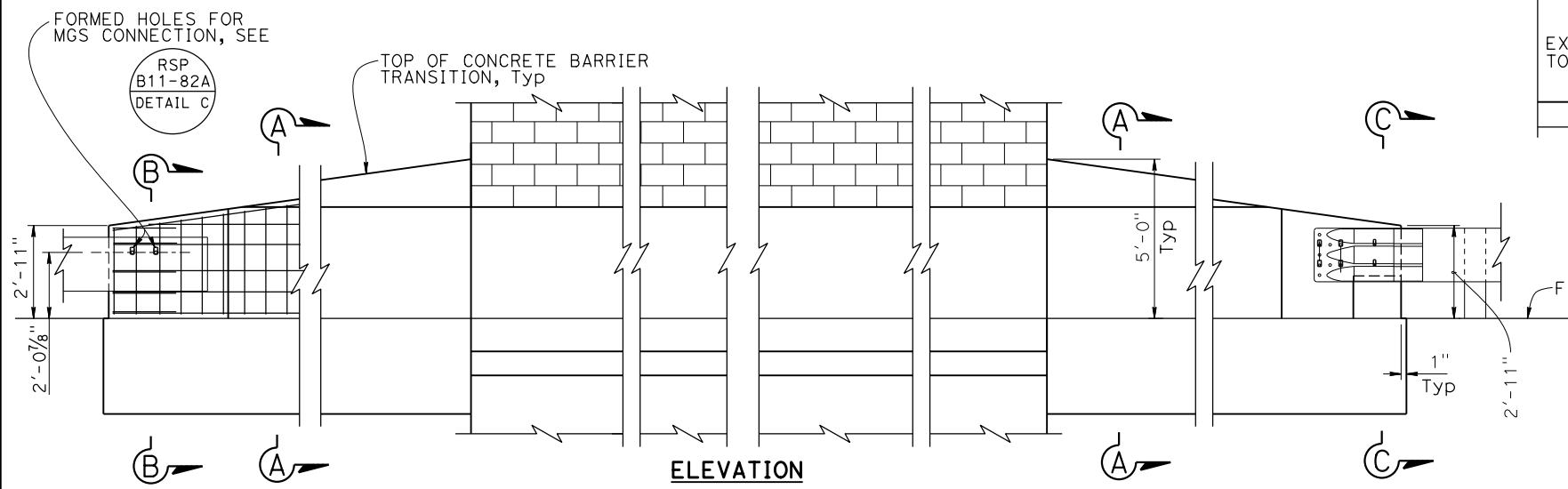
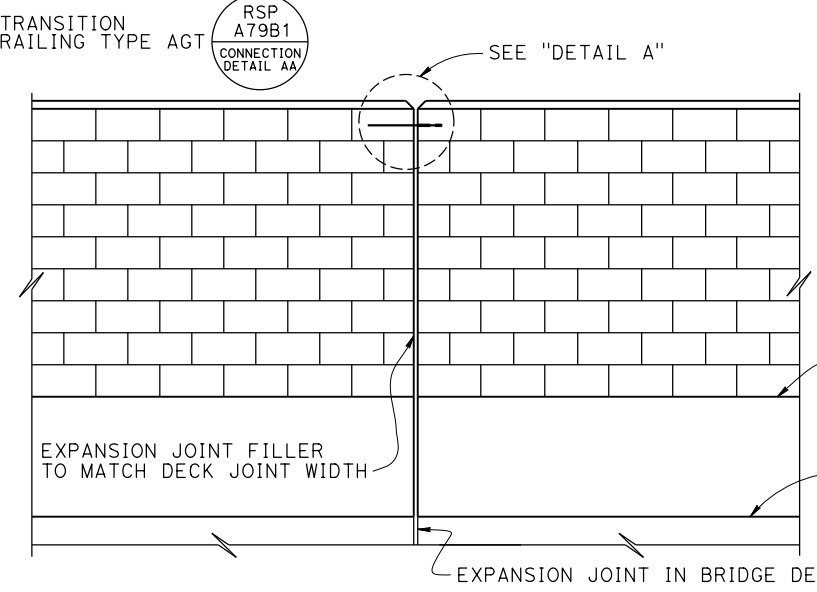
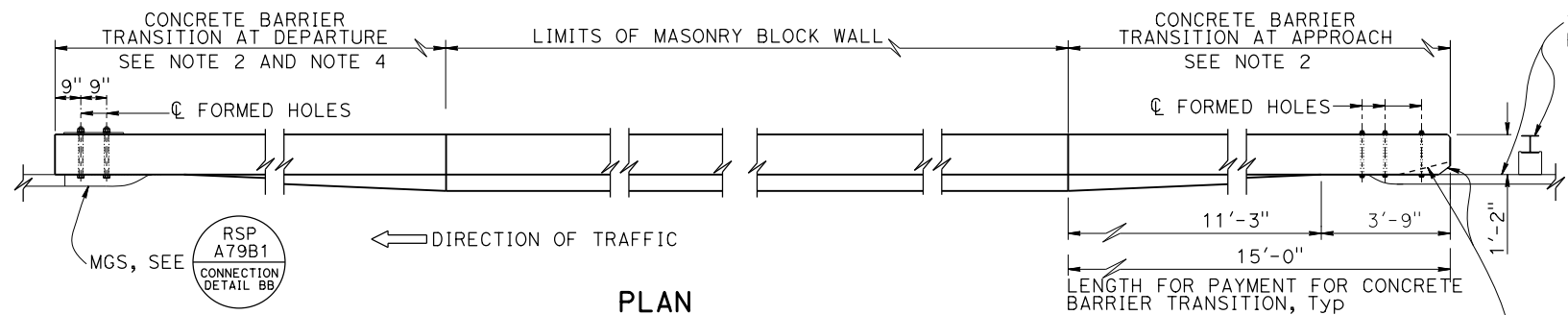
REGISTERED CIVIL ENGINEER	DATE
PLANS APPROVAL DATE	

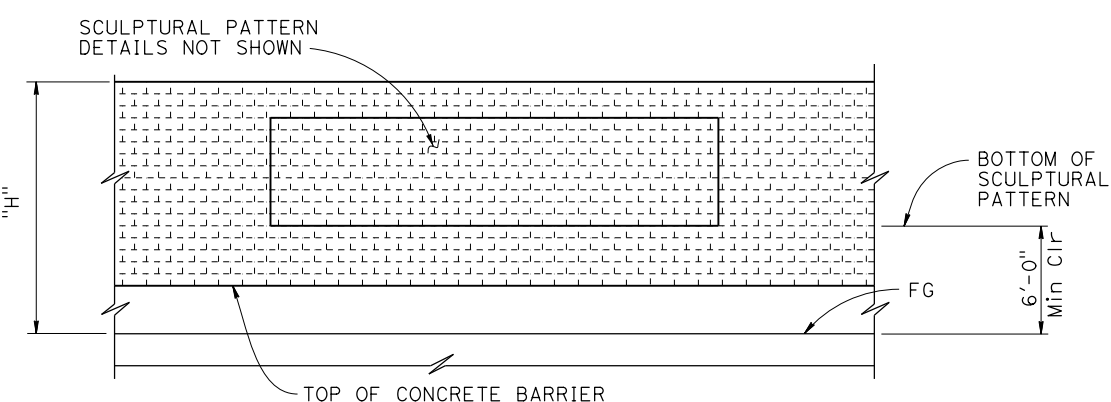
REGISTERED PROFESSIONAL ENGINEER	No.	Exp.	CIVIL
	X	X	

THE STATE OF CALIFORNIA OR ITS OFFICERS OR AGENTS SHALL NOT BE RESPONSIBLE FOR THE ACCURACY OR COMPLETENESS OF SCANNED COPIES OF THIS PLAN SHEET.

THE REGISTERED CIVIL ENGINEER FOR THE PROJECT IS RESPONSIBLE FOR THE SELECTION AND PROPER APPLICATION OF THE COMPONENT DESIGN AND ANY MODIFICATIONS SHOWN.

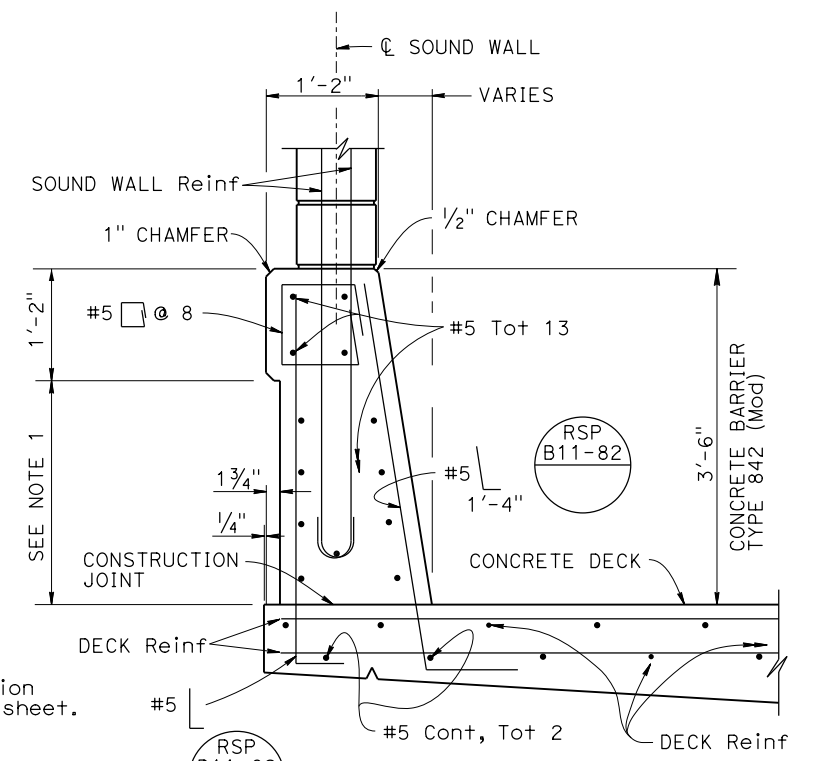


**MIDWEST GUARDRAIL SYSTEM ANCHORAGE**

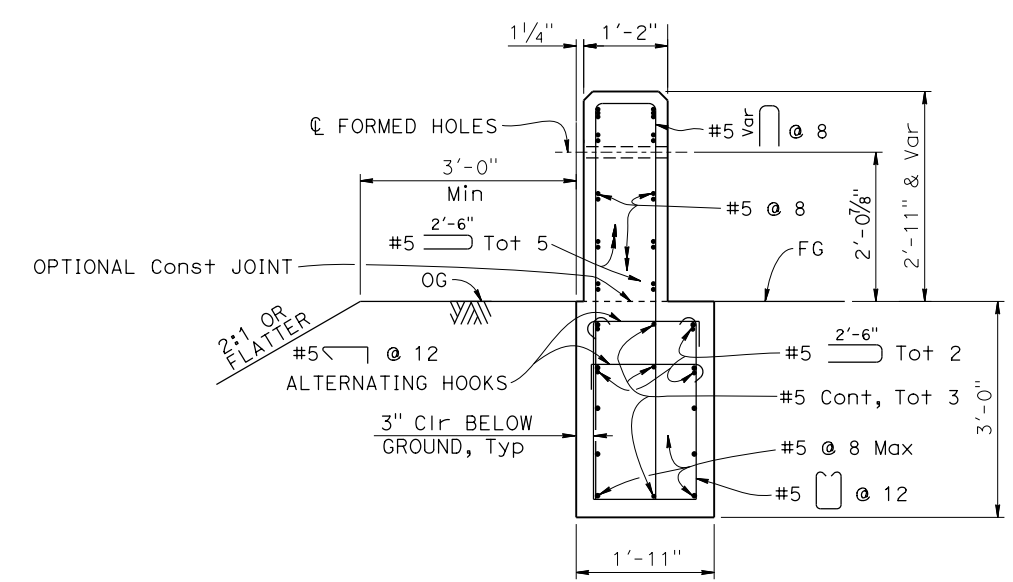


**CLEARANCE DETAIL**

- NOTES:
- Slope ground at traffic side of barrier to drain. Maximum slope  $\pm 10\%$ . See Revised Standard Plan B11-82, Note 3.
  - For "SECTION A-A", "SECTION C-C", "CONCRETE BARRIER TRANSITION AT APPROACH" and connection details, see "SOUND WALL MASONRY BLOCK WITH BARRIER ON RETAINING WALL - DETAILS No. 3" sheet.
  - For details not shown, see Revised Standard Plans B11-81, B11-82 and B11-82A.
  - If departure end block is within the Clear Recovery Zone (CRZ, 30 feet for expressways and freeways, or 20 feet for conventional highways) of opposing traffic, then use the approach end block at departure end.



**BARRIER TYPICAL SECTION**



**SECTION B-B**

NO SCALE

BRIDGE STANDARD DETAILS		
x815-140-2 FILE NO.	January 2024 APPROVAL DATE	The components of the Bridge Standard Details have been prepared under the responsible charge of the Technical Owner, a registered civil engineer in the State of California.

STATE OF CALIFORNIA  
DEPARTMENT OF TRANSPORTATION

DIVISION OF ENGINEERING SERVICES

BRIDGE No. XX-XXXX  
POST MILE X.X

X	
SOUND WALL MASONRY BLOCK ON BRIDGE DETAILS No. 2	