

# GENERAL NOTES LOAD AND RESISTANCE FACTOR DESIGN

DESIGN:  
AASHTO LRFD Bridge Design Specifications, 8th Edition with California Amendments

CT:  
F<sub>t</sub> = 54 kips on Barrier

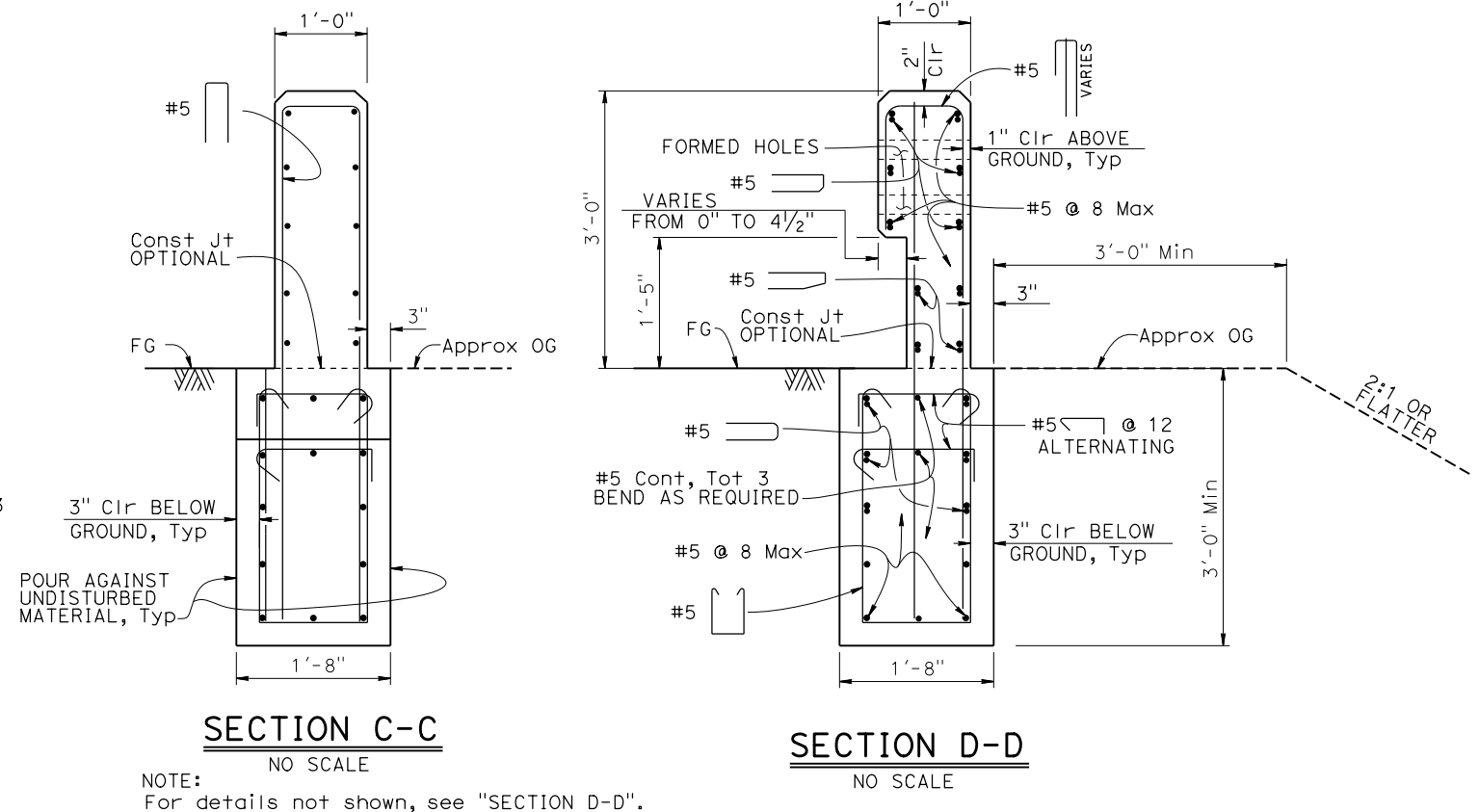
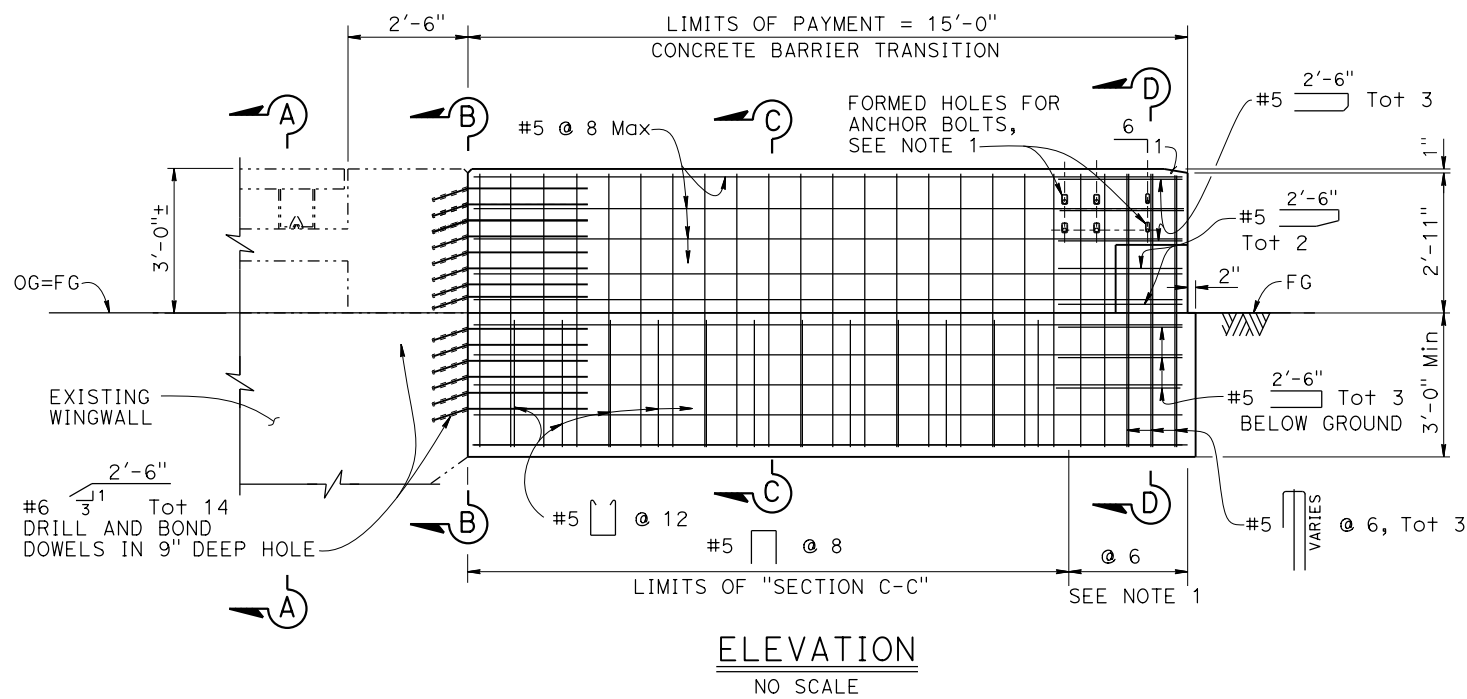
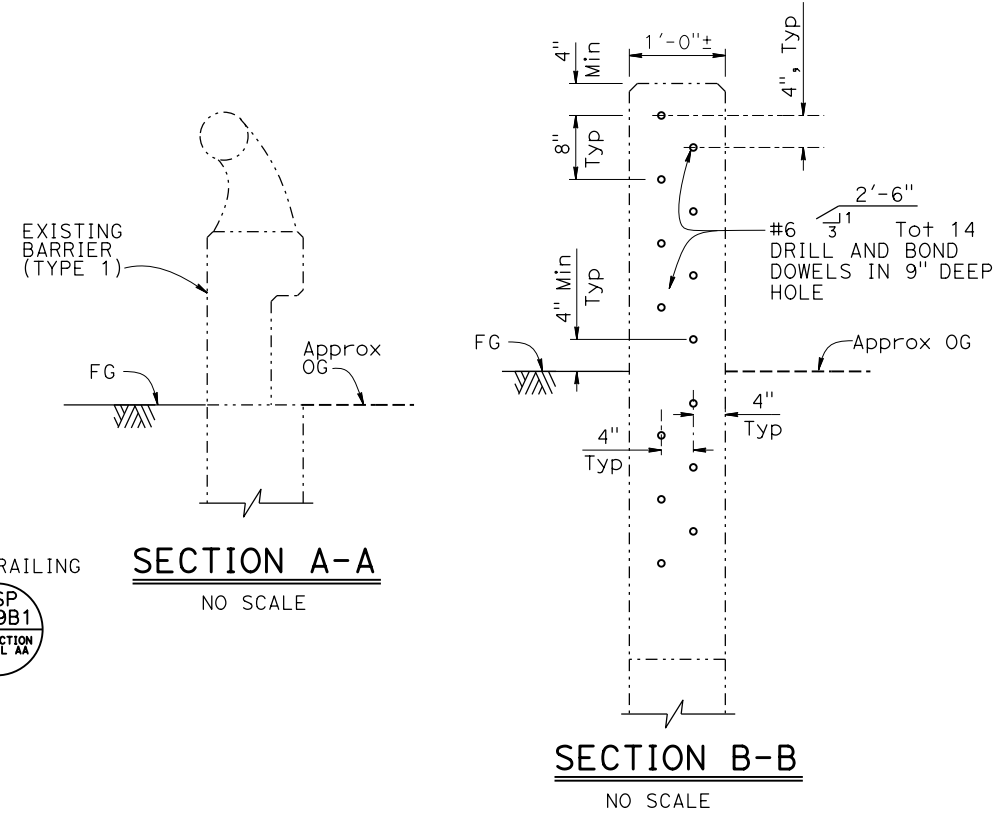
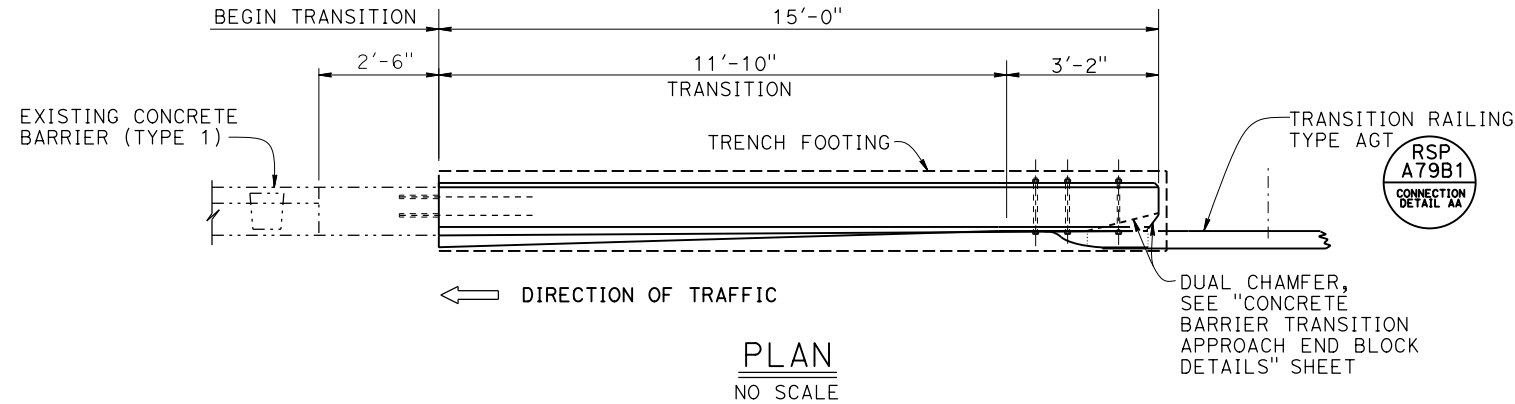
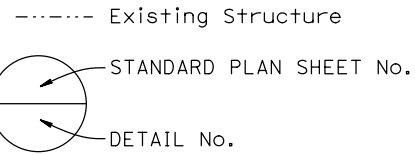
SOIL PROPERTIES:  
Φ = 30°  
γ = 120 pcf

REINFORCED CONCRETE:  
F<sub>y</sub> = 60 ksi  
f'<sub>c</sub> = 3.6 ksi

NOTE:

- For additional approach end block details, see "CONCRETE BARRIER TRANSITION APPROACH END BLOCK DETAILS" sheet.

LEGEND:



NOTE:  
THE CONTRACTOR SHALL VERIFY ALL CONTROLLING FIELD DIMENSIONS BEFORE ORDERING OR FABRICATING ANY MATERIAL.

NOTE:  
For details not shown, see "SECTION D-D".

| Dist | COUNTY | ROUTE | POST MILES TOTAL PROJECT | SHEET No. | TOTAL SHEETS |
|------|--------|-------|--------------------------|-----------|--------------|
|      |        |       |                          | X         |              |

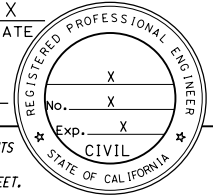
  

|                           |      |
|---------------------------|------|
| REGISTERED CIVIL ENGINEER | DATE |
| PLANS APPROVAL            | DATE |

THE STATE OF CALIFORNIA OR ITS OFFICERS OR AGENTS SHALL NOT BE RESPONSIBLE FOR THE ACCURACY OR COMPLETENESS OF SCANNED COPIES OF THIS PLAN SHEET.

THE REGISTERED CIVIL ENGINEER FOR THE PROJECT IS RESPONSIBLE FOR THE SELECTION AND PROPER APPLICATION OF THE COMPONENT DESIGN AND ANY MODIFICATIONS SHOWN.



| BRIDGE STANDARD DETAILS |                               |   |
|-------------------------|-------------------------------|---|
| xs16-025<br>FILE NO.    | January 2024<br>APPROVAL DATE | The components of the Bridge Standard Details have been prepared under the responsible charge of the Technical Owner, a registered civil engineer in the State of California. |

STATE OF CALIFORNIA  
DEPARTMENT OF TRANSPORTATION

DIVISION OF ENGINEERING SERVICES

|   |   |
|---|---|
| BRIDGE No.<br>XX-XXXX   | X |
| POST MILE<br>X.X  |   |
| <b>CONCRETE BARRIER TRANSITION<br/>AGT CONNECTION TO TYPE 1</b> |   |