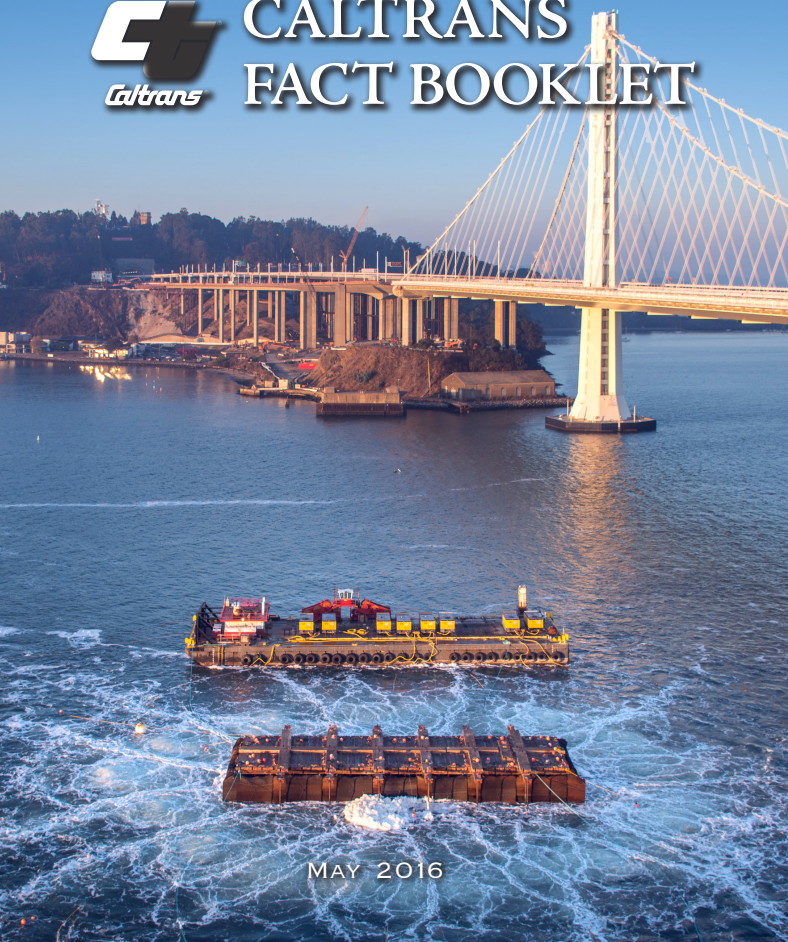


CALIFORNIA DEPARTMENT OF TRANSPORTATION



CALTRANS FACT BOOKLET



MAY 2016



Caltrans Mission, Vision, Goals and Values

Our Mission:

Provide a safe, sustainable, integrated and efficient transportation system to enhance California's economy and livability

Our Vision:

A performance-driven, transparent and accountable organization that values its people, resources and partners, and meets new challenges through leadership, innovation and teamwork

Our Goals:

Safety and Health - Stewardship and Efficiency - Sustainability, Livability and Economy - System Performance - Organizational Excellence

Our Values:

Integrity - Commitment - Teamwork - Innovation



Malcolm Dougherty, Director
California Department of Transportation

Table of Contents

- ◆ Planning and Modal Programs 2-9
- ◆ Sustainability-
 - People, Planet, and Prosperity 10-21
- ◆ Financial Information 22-33
- ◆ Maintenance, Operations, and Project Delivery .. 34-43
- ◆ Appendix 44-49
 - Booklet Frequently Asked Questions 45
 - Web Resources 46-47
 - Caltrans District Offices and District Directors 48-49

Cover photo:

On November 14, 2015, the largest pier of the old San Francisco-Oakland Bay Bridge's east span was removed through a careful and extensively planned implosion. Early in the morning at slack tide, years of preparation, more than half-a-dozen permits, and thousands of hours of labor culminated in a successful implosion. In just six seconds, nearly 600 controlled charges weakened the 50-feet of Pier E3, allowing gravity to collapse the pier into its hollow casing below the mud-line. The "bubble curtain" helps to control adverse effects on the environment with minimal disturbance to wildlife.

For individuals with sensory disabilities, this document is available in alternate formats. To obtain a copy in one of these alternative formats, please write to:

Caltrans Public Affairs Office
1120 N Street, Mail Stop 49
Sacramento, CA 95814
or call: Paulette Lautaret (916) 657-4726

Districts and Counties

Districts	Counties
1	Del Norte, Humboldt, Lake, Mendocino
2	Lassen, Modoc, Plumas, Shasta, Siskiyou, Tehama, Trinity
3	Butte, Colusa, El Dorado, Glenn, Nevada, Placer, Sacramento, Sierra, Sutter, Yolo, Yuba
4	Alameda, Contra Costa, Napa, Marin, San Francisco, San Mateo, Santa Clara, Solano, Sonoma
5	Monterey, San Benito, San Luis Obispo, Santa Barbara, Santa Cruz
6	Fresno, Kern ¹ , Kings, Madera, Tulare
7	Los Angeles, Ventura
8	Riverside, San Bernardino
9	Inyo, Mono, a portion of Kern ¹
10	Alpine, Amador, Calaveras, Mariposa, Merced, San Joaquin, Stanislaus, Tuolumne
11	Imperial, San Diego
12	Orange

¹ The District 9 boundary changed on November 1, 2015 to include a part of Kern County in District 6. The official order was signed on October 30, 2015, encompassing all functions, and went into effect on November 1, 2015.

District/County Data - Division of Transportation Planning:
Katie Benouar, Chief (916) 653-1818

Metropolitan Planning Organizations (MPOs)

Acronym	Name (Counties Represented)
AMBAG	Association of Monterey Bay Area Governments (Monterey, Santa Cruz, and San Benito)
BCAG	Butte County Association of Governments (Butte)
FCOG	Fresno Council of Governments (Fresno)
KCAG	Kings County Association of Governments (Kings)
KCOG	Kern Council of Governments (Kern)
MCTC	Madera County Transportation Commission (Madera)
MCAG	Merced County Association of Governments (Merced)
MTC	Metropolitan Transportation Commission (Alameda, Contra Costa, Marin, Santa Clara, Napa, San Francisco, Solano, San Mateo, and Sonoma)
SACOG	Sacramento Area Council of Governments (Sacramento, Placer, El Dorado, Sutter, Yolo, and Yuba)
SANDAG	San Diego Association of Governments (San Diego)
SBCAG	Santa Barbara County Association of Governments (Santa Barbara)
SCAG	Southern California Association of Governments (Imperial, Los Angeles, Orange, Riverside, San Bernardino, and Ventura)
SRTA	Shasta Regional Transportation Agency (Shasta)
SJCOG	San Joaquin Council of Governments (San Joaquin)
SLOCOG	San Luis Obispo Council of Governments (San Luis Obispo)
STANCOG	Stanislaus Council of Governments (Stanislaus)
TCAG	Tulare County Association of Governments (Tulare)
TMPO	Tahoe Metropolitan Planning Organization (El Dorado, Placer in California and Douglas, Washoe, Carson City in Nevada)

MPO Data - Division of Transportation Planning:
Katie Benouar, Chief (916) 653-1818

California Aviation 2015 State Aviation Facilities

Commercial Service Airports.....	27
General Aviation (GA) Airports.....	217
Joint Use Airport (MIPAA/March ARB) ¹	1
Special-Use Airports	68
Hospital Heliports.....	163
Heliports (Fire, Police, Commuter, Private)	196

Pilots and Registered Aircraft Statistics

GA accounts for approximately 80 percent of aircraft operations statewide.

Federal Aviation Administration (FAA)	
Certified Aircraft	29,167 ²
GA and Air Taxi Active Aircraft (2014) ³	20,560
(Certified Pilots - 59,841; Hours Flown - 2.2 Million)	
Assessed Aircraft Value (2015/22,030 Aircraft).....	\$8.7 Billion

Commercial Service Airports Air Traffic Statistics (2014)⁴

Scheduled Passenger Traffic	201.9 Million
Air Cargo Traffic	4.4 Million U.S. Tons

Federal Capital Improvement Investments

FAA Airport Improvement Program (AIP) 2015 Grants ⁵
FFY 2014-15 (October 1, 2014 - September 30, 2015)

Commercial Service Airport Grants (39 Grants)	\$193.9 Million
General Aviation Airport Grants (75 Grants)	\$52.8 Million

¹ March Inland Port Airport Authority (MIPAA) has access to the adjacent military airfield runway to conduct general aviation operations; therefore, it does not require a State Public Use Airport permit. ARB = Air Resources Board.

² January 2016: FAA Registry.

³ Excludes commercial air carrier aircraft and other exempt aircraft.

⁴ Includes enplaned and deplaned passengers or air cargo, respectively.

⁵ Includes entitlement and discretionary funds based on 90 percent of estimated project cost.

Aviation Data - Division of Aeronautics: Gary Cathey, Chief (916) 654-4848

Division of Aeronautics Income and Expenses

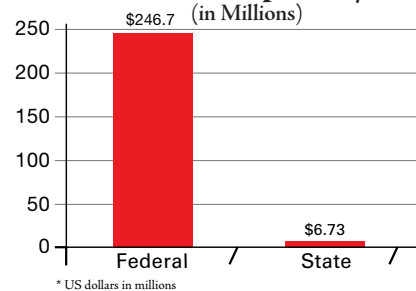
FY 2014-15 (July 1, 2014 - June 30, 2015)

Income - State Aeronautics Account \$9.5 Million
Source: State Excise Fuel Taxes and a \$4 million transfer from the Local Airport Loan Account. (\$0.18/Gallon Aviation Gasoline; \$0.02/Gallon Jet Fuel)

Expenses¹ - California Aid to Airports Program
State Airport Improvement Program (AIP)
 Matching Grants² (46 Grants)\$1.25 Million
 Annual Credit Grants ³ (144 Grants).....\$1.44 Million
Acquisition and Development Grants (23 Grants)...\$4.04 Million

¹ Expenses exclude the Division of Aeronautics operating expenses.
² State AIP Matching Grant match rate is 5.0 percent of the FAA AIP Grant.
³ According to CA Public Utilities Code (PUC) 21682-21683.2, Annual Credit Grants must be funded prior to awarding any other California Aid to Airports Program grants.

2015 Government Investments in Public Use Airport System¹



¹ Funding Sources: Airport and Airway Trust Fund; State Investments - State Aeronautics Account.
Aeronautics Data - Division of Aeronautics: Gary Cathey, Chief (916) 654-4848

California Mass Transportation

(Including Motor Bus, Rail, Street Car, Trolley, Demand Response, Rail Rapid Transit, Ferry Boats, and Other)

Selected Transit Statistics¹ FY 2014-15

Passenger Trips	1.8 Billion
Passenger Fares.....	\$1.75 Billion
Vehicle Miles.....	603 Million
Number of Revenue Vehicles	20.78 Thousand
Operating Revenues and Capital Additions...	\$10.54 Billion

¹ Source: State Controller's Office - Transit Operators Raw Data for Fiscal Years 2013-2014.

State Transit Funds Distributed Statewide¹ FY 2014-15

Transportation Development Act (TDA)	\$1.92 Billion
State Transportation Improvement Program (STIP).....	\$41.65 Billion
(\$83.43 Million "Federalized" STIP is provided by the Federal Transit Administration.)	
Clean Air and Transportation Improvement Program (Proposition 116)	\$1.72 Million
Traffic Congestion Relief Program (TCRP).....	\$39.04 Million
State Local Partnership Program (SLPP)	\$0
Proposition 1A - High Speed Rail Connectivity..	\$78.64 Million
Proposition 1B - Public Transportation Modernization, Improvement and Service Enhancement Account (PTMISEA).....	\$654 Million
Low Carbon Transit Operations Program (LCTOP)	\$24.17 Million
Transit and Intercity Rail Capital Program (TIRCP)	\$0

¹Source: Division of Rail and Mass Transportation Program Managers

California Mass Transportation (cont.)

Federal Transit Funds Distributed Statewide¹ FY 2014-15 (FFY 2015)

FTA 5310 - Enhanced Mobility of Seniors and Individuals with Disabilities Transportation	\$33.7 Million
FTA 5311 and 5311(f) - Non-Urbanized Area Formula Program.....	\$27.9 Million
FTA 5311 (b) - Rural Transit Assistance Program (RTAP).....	\$370 Thousand
FTA 5339 - Bus and Bus Facilities	\$7.4 Million
FTA 5339 - Bus and Bus Facilities State Discretionary	\$1.25 Million

¹ Federal Transit Administration (FTA) Apportionment.

Source: Division of Rail and Mass Transportation Program Managers

California Intercity Rail Ridership

By Calendar Year (in Millions)

Year	Ridership
2015	5.50
2014	5.36
2013	5.52
2012	5.60
2011	5.57
2010	5.23

Note: Ridership shown is the combined ridership for the Pacific Surfliner, San Joaquin, and Capitol Corridor routes.

California Mass Transit and Intercity Rail Data - Division of Rail and Mass Transportation: Bruce Roberts, Chief (916) 654-7293

State Supported Intercity Rail Service

102 State-Owned Intercity Passenger Rail Cars

17 State-Owned Intercity Passenger Rail Locomotives

Name ¹	Capitol Corridor	Pacific Surfliner	San Joaquin
Route	Auburn-Sacramento-Oakland-San Jose	San Luis Obispo-Santa Barbara-Los Angeles-San Diego	Oakland/Sacramento-Stockton-Fresno-Bakersfield
Route Mileage	169	354	364
No. of Daily Round Trips	Auburn-Sacramento: 1 Sacramento-Oakland: 15 Oakland-San Jose: 7	San Luis Obispo-Santa Barbara: 2 Santa Barbara-Los Angeles: 5 Los Angeles-San Diego: 11	Oakland-Stockton-Bakersfield: 4 Sacramento-Stockton-Bakersfield: 2
No. of Stations	17	31	18
Railroad Companies ²	Union Pacific/Locally Owned	Union Pacific/BNSF ⁴ Railway/ Locally Owned	Union Pacific/BNSF ⁴ Railway
No. of Passenger Cars ³	Caltrans: 32.5 ⁵ Amtrak: 2	Caltrans: 7 Amtrak: 49	Caltrans: 40.5 ⁵ Amtrak: 10
No. of Cab Cars ^{3,6}	Caltrans: 7 Amtrak: 0	Caltrans: 3 Amtrak: 8	Caltrans: 12 Amtrak: 0
No. of Locomotives ³	Caltrans: 9 Amtrak: 0	Caltrans: 0 Amtrak: 15	Caltrans: 8 Amtrak: 0
FFY 2014-15			
Ridership	1.5 Million	2.8 Million	1.2 Million
Passenger Miles	98.9 Million	246.5 Million	164.2 Million
Average Passenger Trip Length	67 Miles	87 Miles	140 Miles
Total Revenue	\$30.01 Million	\$75.84 Million	\$40.34 Million
State Funding	\$32.60 Million	\$44.29 Million	\$42.60 Million

¹ 100% of the three corridors is State supported.

² Amtrak operates all passenger service on railroad company and public agencies' rights-of-way. Portions of the *Pacific Surfliner* and *Capitol Corridor* routes are owned by public agencies.

³ Equipment owned by Caltrans and Amtrak assigned to each route.

⁴ Burlington Northern and Santa Fe Railway (BNSF).

⁵ The San Joaquin Route and Capitol Corridor share a car fleet of 73 cars in Northern California, and car allocation is based upon need and maintenance. The pool is fluid, and cars can be assigned as needed on either route. The calculation of car use distribution, including cars out of service for maintenance, results with the half-car designation.

⁶ A cab car in an unpowered passenger coach with an operator's cab on it, used when trains are pushed by the locomotive. Trains on the Capitol Corridor all operate with the locomotives on the train facing west, so that all westbound trains are pulled by the locomotive and all eastbound trains are pushed by the locomotive with an operator in the cab car.

California Intercity Rail Data -
Division of Rail and Mass Transportation: Bruce Roberts, Chief (916) 654-7293

California Household Travel Survey¹ (CHTS) Travel Mode Distribution Comparison of 2000-2002 to 2010-2012 Surveys

Mode	2000-02	2010-12
Auto/Van/Truck Driver	60.2%	49.3%
Auto/Van/Truck Passenger	25.8%	25.9%
Walk Trips	8.4%	16.6%
Public Transportation	2.2%	4.4%
Bicycle	0.8%	1.5%
Private Transportation	NA	0.6%
School Bus	NA	0.6%
Carpool/Vanpool	NA	0.6%
All Other	0.7%	0.5%
Total	100.0%	100.0%

Bike- Walk-Transit Mode Share by District²

Caltrans Districts	Walk	Bike	Transit
1	14.4%	1.2%	2.4%
2	5.6%	2.1%	0.5%
3	8.7%	2.9%	1.4%
4	20.1%	2.1%	5.4%
5	14.9%	2.4%	1.8%
6	13.4%	1.3%	1.8%
7	20.9%	1.2%	6.4%
8	9.6%	0.7%	2.1%
9	16.5%	3.5%	0.8%
10	12.0%	0.7%	1.8%
11	13.3%	1.3%	3.9%
12	10.9%	1.2%	2.3%
% of State Total	16.5%	1.5%	4.4%

¹ The CHTS provides regional and inter-regional trip data that statewide and regional travel models require in order to develop and calibrate forecasts for 2015, 2020, 2035 and 2040 Greenhouse Gas emissions (GHG). SB 375 (Sustainable Communities/Climate Protection Act of 2008) and SB 391 (CA Homes and Jobs Act of 2013) require GHG forecasts.

² Source CHTS 2010-12

California Household Travel Survey Data - Division of Transportation Planning:
Katie Benouar, Chief (916) 653-1818

Fuel Use Quantity of Fuel in Gallons and Total Cost

Total Fuel Cost for FY 2014-2015	\$36,206,000
Total Fuel Used in FY 2014-2015	11,833,109
Unleaded Gas	6,471,150
Diesel	2,333,533
Alternative Fuel Used in FY 2014-2015 ¹	3,028,426
Biodiesel	2,738,218
E-85	119,322
CNG	152,863
LPG	18,023
Number of Bulk Fueling Stations	226

¹Alternate Fuel Definitions:

Biodiesel - Produced from renewable resources and contains no petroleum; in its pure form it is known as B11 (100 % biodiesel) although it is often blended with petroleum diesel; e.g., B-5, B-10.

E-85 - 85% ethanol and 15% gasoline.

CNG - Compressed natural gas.

LPG - Liquefied petroleum gas.

Fuel Use data from Division of Equipment: Larry Orcutt, Chief (916) 227-9600

Carbon Dioxide (CO₂) Emissions from Caltrans Operations

Caltrans has reduced GHG emissions by 24.5% between 2010 and 2015!

Greenhouse Gases ¹ 2010 through 2014 (in Metric Tons)						
	2010	2011	2012	2013	2014	2015 ²
Vehicle Fuels ²	118,042	115,118	112,758	108,810	105,338	110,997
Building Electricity and Gas	35,336	38,019	29,028	36,075	30,039	30,751
Street Lighting	64,107	61,270	56,638	54,339	21,808	22,425
Total Emissions	217,485	214,407	198,424	199,224	157,185	164,173

¹ Data has been reported to the Climate Registry but has not been verified - changes may occur.

² Due to a 2015 Statewide increase in the carbon intensity of the energy grid, Caltrans' 2015 emissions from buildings and streetlights increased.

Greenhouse Gases Data - Division of Transportation Planning:
Katie Benouar, Chief (916) 653-1818.

State Agency Buy Recycled Campaign (SABRC) FY 2014-15

Compost, Co-compost mulch	Reportable Commodity ¹	Commodity with Recycled Content ²	Recycled Percentage ³
Antifreeze	\$128,057	\$885	1%
Glass Products	\$176,748	-	0%
Lubricating Oils	\$815,987	\$767,362	94%
Paper Products	\$4,097	\$2,559	62%
Plastic Products	\$51,177	\$2,240	4%
Printing and Writing Paper	\$17,092	\$17,092	100%
Metal Products	\$14,670,235	\$14,670,235	100%
Tire-derived Products	\$12,529	-	0%
Tires ⁴	\$2,507,426	\$533,683	21%
Total	\$18,383,349	\$15,944,056	87%

¹ Total amount spent within that category to perform all statewide Division of Equipment (DOE) operations.

² Total amount spent within that category that contained post-consumable recycled content.

³ The percentage of the total amount spent that contained post-consumable recycled content.

⁴ Includes data collected from 10 of the 12 District shops.

Equipment Materials Recycled data - Division of Equipment:
Larry Orcutt, Chief (916) 227-9600

LED Replacements

LED Replacements	FY 2012-13 ¹	2014-15 Cumulative Installed
Light Emitting Diodes (LEDs) [Number Installed]	24,731	48,472

¹ First year LED conversion was documented.

LED data - Division of Maintenance: Tony Tavaras, Chief (916) 654-5849

Statewide Registered Electric and Hybrid Vehicles by Year

Year	Hybrid	Electric
2015	958,490	111,256
2014	838,795	79,594
2013	709,766	48,951
2012	585,329	30,672
2011	488,510	24,408
2010	395,483	18,905
2009	337,881	18,780
2008	284,324	not available

Source: Statewide Registered Electric and Hybrid Vehicles Statistics -
DMV Statistical Record of Motive Power Report

Division of Research, Innovation, and System Information:
Jim Appleton, Chief (916) 654-8877

California Structures Statistics Maintenance and Repair of Bridges FY 2014-15 Annual Expenditure

Actual Expenditures - (Includes SHOPP) ¹	\$434.6 Million
State-Owned Bridges and Other Structures.....	13,225
Including:	
Tunnels and Tubes (Each Bore).....	43
Ferry Boats	2
Large State-Owned Bay-Crossing Bridges.....	9

Antioch	Dumbarton	San Francisco-Oakland Bay
Benicia-Martinez	Richmond-San Rafael	San Mateo-Hayward
Carquinez	San Diego Coronado	Vincent Thomas

¹ SHOPP - State Highway Operations and Protection Program
Structures Statistics - Division of Maintenance: Tony Tavaras, Chief (916) 654-5849

California Statistics

California State Population

37,253,956

Source: 2010 United States Census from California Department of Finance
http://www.dof.ca.gov/research/demographic/state_census_data_center/census_2010/

State Highway System - 2014

Number of State Highways..... 265
 Lane-Miles.....51,900
 Centerline Miles.....15,100

Rural/Urban Centerline Miles		
Rural ¹	68%	10,312
Urban ²	32%	4,788
Total	100%	15,100

FWY-EXP/Non FWY-EXP Centerline Miles		
Fwy/Exp	27%	4,050
Non Fwy/Exp ³	73%	11,050
Total	100%	15,100

Interstate/Non-Interstate Centerline Miles		
Interstate	16%	2,451
Non-Interstate	84%	12,649
Total	100%	15,100

- ¹ Rural roads are those found in areas with a population of less than 5,000.
² Urban roads are found in areas with a population of more than 5,000.
³ Non-freeway and Non-expressway includes conventional highways and highways located on one-way city streets.

Mileage Statistics - Data Source: 2014 Public Road Data Publication - Compiled by Division of Research, Innovation, and System Information: Jim Appleton, Chief (916) 654-8877

Non-State Highway System - 2014

Non-State Centerline Miles:159,630

Non-State Highway Centerline Miles		
City Roads	48%	76,842
County Roads	41%	64,441
Federal-Owned Roads ¹	9%	14,915
Other Jurisdictions ²	2%	3,432
Total Non-State Centerline Miles	100%	159,630

- ¹ Includes roads owned by Bureau of Indian Affairs, Forest Service, Fish and Wildlife Service, Bureau of Reclamation, Military, National Park Service, Department of Defense, and Army Corps of Engineers.
² Includes roads owned by State Forestry and Fire Protection, State Parks and Recreation, University of California, Local Agency - Golden Gate Bridge, port authorities, and tribal lands.
 Non-State Highway System Data - Compiled by Division of Research, Innovation, and System Information: Jim Appleton, Chief (916) 654-8877

Annual Vehicle Miles of Travel (AVMT)¹

2014 (in Billions)

- ¹ Totals may not equal sum of components due to independent rounding

Non-State Highway Centerline Miles	
State Highways (Interstate AVMT= 86.2 billion of State Highway AVMT)	180.8
Local Roads (Includes city streets and county roads only)	152.7
Other Agencies (Includes Federal, other State and other local jurisdictions)	1.2
Total of All Public Roads²	334.7

- ² All public roads include those owned by cities, counties, various State and Federal agencies, and tribal lands.

AVMT Statistics - Data Source: 2014 Public Road Data Publication - Compiled by Division of Research, Innovation, and System Information: Jim Appleton, Chief (916) 654-8877

Department of Motor Vehicles (DMV) Statistics as of January 1, 2015

Registered Vehicles ¹	
Autos	23,805,920
CVRA Trucks ²	466,692
Non-CVRA Trucks ³	5,048,754
PTI Trailers ⁴	2,176,197
Trailer Coach/CCH ⁵	389,876
Motorcycles	862,705
Misc. Vehicles ⁶	154,124
CA Based IRP Vehicles ⁷	76,087
Fee-Paid Vehicles Registered	32,980,355
Fee Exempt Vehicles Registered	570,131
Total Vehicles Registered	33,550,486

Licensed Drivers	
Class A ⁸	469,597
Class B ⁹	210,957
Class C ¹⁰	24,332,537
Class M ¹¹	1,377
Total	25,014,468

¹ The Commercial Vehicle Registration Act (CVRA) changed the way the Department of Motor Vehicles registers commercial motor vehicles and some trailers.

² CVRA Trucks are motor vehicles with a declared gross vehicle weight (GVW) of 10,001 lbs or more and are affected by the new law.

³ Non-CVRA Trucks are motor vehicles with a declared GVW less than 10,001 lbs, taxis, rental limousines or vans, and are not affected by the new law.

⁴ PTI Trailers are trailers that are subject to Permanent Trailer Identification (PTI) fees under this law. All trailers except park trailers and trailer coaches are subject to PTI.

⁵ Trailer Coach/CCH are generally Motor Homes.

⁶ Includes Historical Vehicles (e.g., Spec/Farm Equipment, etc).

⁷ CA Based International Registration Plan (IRP) Vehicles are IRP Vehicles based in California. IRP is a U.S. Based plan that allows for distribution of registration fees to member states. If a vehicle is based in CA it has a California license plate but is allowed to travel in other states.

⁸ Class A license includes everything: Buses, Big Rigs, Multi Trailers, and Cars.

⁹ Class B license includes Bus/No Trailers.

¹⁰ Class C license includes normal cars or Motor Homes/No Motorcycles.

¹¹ Class M license includes Two-Wheel Motorcycles or a Motor-Driven cycles.

California DMV Statistics ~ https://www.dmv.ca.gov/portal/wcm/connect/fafd3447-8e14-44f6-bb98-e85f3aa9a207/ca_dmv_stats.pdf?MOD=AJPERES

Employee Safety

Caltrans Worker Fatalities as of September 30, 2015¹

Year	Errant Drivers	Other Accidents	Total Fatalities
2015	0	1	1
2014	0	0	0
2013	0	2	2
2012	0	0	0
2011	1	2	3
2010	1	0	1
2009	1	1	2
2008	0	1	1
2007	3	0	3
2006	2	0	2
2005	0	1	1
2004	1	2	3
2003	0	0	0
2002	0	0	0
2001	0	1	1
1921-2000	--	--	164
Total			184

¹ Does not include contractors' employees.

Caltrans on the Job Illness and Injury Incident Rates¹

Departmental Goal 18% Reduction by December 2020

	2012	2013	2014	3 Year Average ²	2015 ³
Injuries/Illnesses	1,528	1,466	1,399	1,464	1,331
No. of Employees	20,898	20,663	20,014	20,525	19,826
Incident Rate	7.31	7.09	6.99	7.13	6.71

¹ Incident Rate = [All injuries and illnesses requiring medical attention divided by (number of employees x 2,000) x 200,000]. Benchmark Incident Rate = 6.81

² A three year average is the industry standard for Incident Rate comparison and these figures are taken from years 2012, 2013, and 2014.

³ 2015 comparison to 2014 injuries: Injuries/Illnesses -68; Incident Rate -3.96%, 20.22% Over Goal

Employee Safety - Division of Safety and Management Services:
Cheryl McNulty, Chief (916) 227-2403

Caltrans Full-Time Employees¹

Number and Percentage per Category²
as of September 30 each Year

Employee Category	2011		2012		2013		2014		2015	
	No.	%	No.	%	No.	%	No.	%	No.	%
Engineering	8,100	42%	7,949	41%	7,746	41%	7,536	40%	7,405	40%
Maintenance	4,747	25%	4,974	26%	4,883	26%	4,760	25%	4,770	26%
All Others	6,382	33%	6,524	33%	6,350	33%	6,479	35%	6,240	34%
Total	19,229	100%	19,447	100%	19,979	100%	18,775	100%	18,415	100%

¹ The employment summary reflects all time bases and tenures for employee primary positions except additional and retired annuitant positions.

² Percentage numbers are rounded.

Caltrans Full-Time Employees Data - Division of Human Resources:
Michelle Tucker, Chief (916) 227-7700

Summary of Departmental Ethnicity/Gender Percentages¹

FY 2008-2015 as of September 30 each Year

Year	Women	Men	Minorities	Caucasian
2015	25.3%	74.7%	53.4%	46.6%
2014	25.4%	74.6%	52.8%	47.2%
2013	25.4%	74.6%	52.3%	47.7%
2012	26.02%	75.98%	51.4%	48.6%
2011	25.7%	74.3%	51.8%	48.2%
2010	25.9%	74.1%	51.7%	48.3%
2009	26.3%	73.7%	51.3%	48.7%
2008	26.5%	73.5%	50.9%	49.1%

Ethnicity/Gender Percentages Data - Equal Employment Opportunity Program:
Gina Cardoza, Program Manager (916) 227-7413

Small Business and Disabled Veteran Business Enterprise (DVBE)

FY 2014-15 Participation Rates

Small Business (SB)/Microbusiness (MB)

Total Dollars Awarded for State Funded

Contracts and Procurements \$1,230,371,824

SB / MB Participation\$349,378,944

Percentage.....28.40%

DVBE

Total Dollars Awarded for State Funded

Contracts and Procurements \$1,230,371,824

DVBE Participation.....\$47,149,004

Percentage..... 3.83%

Source: Contracting Activity Report, DPAC, FY 2014-15

SB-DVBE Statistics - Office of Business and Economic Opportunity (OBEO):
Janice Salais, Acting Assistant Director (916) 324-0990

Summary of Departmental Ethnicity/Gender Percentages

2014-15 Fiscal Year by District as of September 30, 2015

2005-06 to 2014-15 Fiscal Year Totals and Percentages

District	Total Caltrans Workers ¹	African-American	American Indian	Asian	Filipino	Hispanic	Pacific Islander	Caucasian	Other	Men	Women	Disability
District 1	574	0.9%	2.8%	1.0%	1.4%	6.3%	0.3%	82.2%	5.1%	76.3%	23.7%	21.1%
District 2	716	0.8%	1.3%	1.1%	0.3%	5.2%	0.6%	89.4%	1.4%	82.8%	17.2%	14.4%
District 3	1,488	3.4%	1.0%	8.5%	1.3%	10.8%	0.7%	71.3%	3.0%	81.3%	18.7%	14.8%
District 4	2,976	14.0%	0.4%	28.0%	9.5%	12.4%	0.9%	30.8%	3.9%	75.1%	24.9%	12.4%
District 5	645	1.9%	0.6%	4.7%	2.3%	23.9%	0.2%	63.7%	2.8%	76.7%	23.3%	20.3%
District 6	1,152	5.1%	1.3%	14.1%	2.8%	26.9%	0.8%	45.6%	3.4%	77.7%	22.3%	21.5%
District 7	2,299	15.7%	0.3%	24.8%	5.2%	26.6%	0.5%	22.7%	4.2%	79.8%	20.2%	13.1%
District 8	1,374	10.3%	0.2%	16.3%	3.4%	27.4%	0.4%	37.3%	4.5%	80.1%	19.9%	22.5%
District 9	272	0.4%	6.3%	1.1%	1.1%	8.1%	0.7%	81.3%	1.1%	85.3%	14.7%	14.7%
District 10	747	4.4%	0.9%	14.2%	5.5%	15.9%	0.8%	55.3%	2.9%	79.8%	20.2%	20.7%
District 11	1,185	6.2%	0.3%	10.5%	6.7%	27.5%	0.7%	44.2%	4.0%	73.8%	26.2%	14.5%
District 12	755	5.4%	0.3%	25.4%	3.2%	20.4%	0.8%	38.4%	6.1%	76.8%	23.2%	18.1%
HQ	5,331	6.0%	0.5%	21.8%	4.6%	14.4%	0.6%	48.6%	3.5%	65.6%	34.4%	18.2%
Fiscal Year Totals and Percentages												
2014-15	19,514	7.8%	0.7%	18.2%	4.7%	17.7%	0.6%	46.6%	3.7%	74.7%	25.3%	16.8%
2013-14	19,971	7.8%	0.7%	17.8%	4.7%	17.4%	0.6%	47.2%	3.7%	74.6%	25.4%	12.1%
2012-13	20,387	7.8%	0.6%	17.1%	4.6%	17.1%	0.6%	47.7%	3.8%	74.6%	25.4%	12.6%
2011-12	20,686	7.9%	0.6%	17.9%	4.7%	16.8%	0.6%	48.0%	3.6%	74.3%	25.7%	13.3%
2010-11	20,511	7.7%	0.6%	18.1%	4.7%	16.7%	0.5%	48.2%	3.4%	74.3%	25.7%	14.1%
2009-10	20,900	7.7%	0.6%	18.1%	4.7%	16.6%	0.5%	48.3%	3.4%	74.3%	25.9%	14.4%
2008-09	21,502	7.7%	0.6%	17.9%	4.8%	16.3%	0.5%	48.7%	3.4%	73.7%	26.3%	15.1%
2007-08	22,081	7.8%	0.6%	17.6%	4.9%	16.1%	0.5%	49.1%	3.3%	73.5%	26.5%	6.5%
2006-07	21,703	7.9%	0.6%	17.3%	4.8%	16.0%	0.5%	49.7%	3.3%	73.5%	26.5%	6.7%
2005-06	20,502	8.1%	0.6%	16.7%	4.7%	16.0%	0.5%	50.2%	3.3%	73.6%	26.4%	6.9%

¹ The employment summary reflects all time bases and tenures for employee primary positions except additional and retired annuitant positions.

Transportation Revenue Facts

Federal Fuel Excise Taxes

- 18.4 cents per gallon gasoline tax.
- 24.4 cents per gallon diesel tax.
- Taxes are collected and deposited in the Federal Highway Trust Fund.
- Taxes are returned to the states in the form of Federal Obligation Authority (OA) for reimbursement.
- Under the Federal Authorization MAP-21, California's formula obligation authority for Federal Fiscal Year 2015 was approximately \$3.2 billion. On December 4, 2015, President Obama signed the first long term funding plan for transportation since 2009. The Fixing America's Surface Transportation (FAST) Act, provides stable funding over the next five years, and authorizes approximately \$3.4 billion for California in Federal Fiscal Year 2016.

State Fuel Excise Tax on Gasoline

- 27.8 cents per gallon effective July 1, 2016. This is a decrease of 2.2 cents per gallon from 2015-16.
 - Adjusted annually by State Board of Equalization. (BOE) to maintain revenue neutrality with the loss of State sales tax on gasoline.
 - 18 cents per gallon base state excise tax, unchanged since 1994.
 - ♦ Approximately 64% of revenues to the State.
 - ♦ Approximately 36% of revenues to Cities and Counties.
 - 9.8 cents per gallon price-based excise tax effective July 1, 2016, a decrease of 2.2 cents per gallon from 2015-16.
 - ♦ The first allocation of funding is used to backfill transportation programs previously funded by weight fees (see section under Weight Fees on page 28), with the remaining split as follows:
 - ♦ 44% to State Transportation Improvement Program (STIP).
 - ♦ 44% to Local Streets and Roads.
 - ♦ 12% to State Highway Operation Protection Program (SHOPP).

Transportation Revenue Facts (cont.)

Price-based Excise Tax Revenue Distribution

State Fuel Excise Tax on Diesel

- 16 cents per gallon effective July 1, 2016. This is an increase of three cents per gallon from 2015-16.
 - Adjusted annually by BOE to maintain revenue neutrality with the increase to State sales tax on diesel:
 - About 48% of revenue to the State.
 - About 52% of revenue to cities and counties.

State Sales Tax on Gasoline

- General Statewide sales tax on gasoline was eliminated July 1, 2010.

State Sales Tax on Diesel

(Available for Transportation Purposes)

- 6.5% sales tax on diesel:
 - 4.75% base tax.
 - 1.75% additional tax, effective July 1, 2014.
 - About 64% of revenues to State Transit Assistance.
 - About 36% of revenues to the Public Transportation Account (PTA).

Transportation Revenue Facts - Division of Budgets: Steven Keck, Chief (916) 654-4556

Transportation Revenue Facts (cont.)

Weight Fees

In addition to the revenue generated through fuel taxes, the State collects commercial vehicle registration fees, also known as “weight fees”. Weight fees are calculated by the Department of Motor Vehicles, based on the gross vehicle weight of commercial vehicles, and are deposited into the State Highway Account (SHA).

Weight Fee Swap

- In 2010, California voters passed Proposition 22, which amended the California Constitution by significantly restricting the State from using fuel excise tax revenues for General Fund (GF) relief, which was previously allowed.
- In 2011, the passage of AB105 created a “weight fee swap” which allowed the State to use weight fee revenues, rather than fuel excise tax revenues for GF relief.
 - The bill authorizes the transfer of weight fee revenues from the SHA to the GF for transportation bond debt service and loans.
- To offset this diversion, an equivalent amount of the price-based excise tax is transferred to the SHA.

Transportation Revenue Facts - Division of Budgets: Steven Keck, Chief (916) 654-4556

State Gasoline Excise Tax History

Effective Date	Rate/gallon	Notes
July 1, 2016	\$0.278	Decreased by 2.2 cents/gallon
July 1, 2015	\$0.300	Decreased by 6 cents/gallon
July 1, 2014	\$0.360	Decreased by 3.5 cents/gallon
July 1, 2013	\$0.395	Increased by 3.5 cents/gallon
July 1, 2012	\$0.360	Increased by .003 cent/gallon
July 1, 2011	\$0.357	Increased by .004 cent/gallon
July 1, 2010 ¹	\$0.353	Increased by 17.3 cents/gallon
January 1, 1994	\$0.180	Increased by one cent/gallon
January 1, 1993	\$0.170	Increased by one cent/gallon
January 1, 1992	\$0.160	Increased by one cent/gallon
January 1, 1991	\$0.150	Increased by one cent/gallon
August 1, 1990	\$0.140	Increased by five cents/gallon
January 1, 1983	\$0.090	Increased by two cents/gallon
October 1, 1963	\$0.070	Increased by one cent/gallon
July 1, 1953	\$0.060	Increased by 1.5 cents/gallon
July 1, 1947	\$0.045	Collier-Burns Act; Fuel tax increase by 1.5 cents/gal.
July 29, 1927	\$0.030	One cent/gal. added for new highway construction
October 1, 1923	\$0.020	First gas tax approved by voters

Note: State and Federal taxes for aviation fuel are not included in this summary.

¹ ABX8 6 and ABX8 9 Fuel Tax Swap eliminated State Sales Tax on gasoline and replaced it with an increase to the Excise Tax on gasoline. Beginning July 2010, taxes will be adjusted annually by the Board of Equalization to maintain revenue neutrality with the loss of State Sales Tax on gasoline.

Source: Fuel Tax History - California State Board of Equalization (BOE) website.

http://www.boe.ca.gov/sptaxprog/tax_rates_stfd.htm#9

<http://www.boe.ca.gov/sutax/gasswapfaq.htm#1>

Gasoline Excise Tax History - Division of Budgets: Steven Keck, Chief (916) 654-4556

State Transportation Construction Capital Allocations (in Millions) and Jobs Created

Capital Allocations	Actual	Actual	Projected
	2013-14	2014-15	2015-16
Proposition 1B ¹	\$246	\$40	\$50
State Transportation Improvement Program (STIP)	\$519	\$469	\$481
State Highway Operations and Protection Program (SHOPP) ²	\$1,835	\$1,883	\$1,772
Total Capital Allocations	\$2,600	\$2,392	\$2,303
Total Gross State Product Gain	\$5,408	\$4,975	\$2,047
Jobs Created - Actual And Projected			
Total Jobs Created in California	Actual	Actual	Projected ³
	2013-14	2014-15	2015-16
	46,800	43,100	25,600

¹ Includes STIP Augmentation and SHOPP Augmentation projects

² Includes SHOPP Minor projects. Allocations per 4th Quarter Finance Report.

³ The economic multipliers for estimating jobs and value added (GDP) impacts from transportation infrastructure investments have been updated using the IMPLAN input/output model, base year 2013.

Capital Allocations - Division of Transportation Programming:
Bruce DeTerra, Chief (916) 654-4013

Product Gain/Jobs Created - Division of Transportation Planning:
Katie Benouer, Chief (916) 653-1818

Countywide Transportation Sales Tax Measures

Transit Districts (Permanent 0.5% Tax)

• BART (Alameda, Contra Costa, San Francisco)		
• San Mateo	• Santa Clara	• Santa Cruz

Countywide Transportation Sales Tax Measures¹ (cont.)

Self-Help Counties - Temporary 0.5% Tax (in Millions)

County	Duration	Est. 2016 Revenue
Alameda (Measure BB, 1% Tax)	2015-2045	\$315
Contra Costa	1989-2034	\$85
Fresno	1987-2027	\$73
Imperial	1990-2050	\$17
Los Angeles (1% Tax)	Permanent	\$1,606
Los Angeles (Measure R)	2009-2039	\$803
Madera	1990-2027	\$9
Marin	2005-2025	\$27
Napa (Measure T) ²	2018-2043 (Est.)	-
Orange	1991-2041	\$345
Riverside	1989-2039	\$181
Sacramento	1989-2039	\$118
San Bernardino	1990-2040	\$184
San Diego	1988-2048	\$292
San Francisco	1990-2034	\$102
San Joaquin	1991-2041	\$57
San Mateo	1989-2033	\$87
Santa Barbara	1990-2040	\$38
Santa Clara	1996-2036 (Est.)	\$218
Santa Clara - (BART Ext 0.125%)	2013-2043 (Est.)	\$54
Sonoma (0.25%)	2005-2025	\$23
Sonoma-Marin (SMART 0.25%)	2009-2029	\$37
Tulare	2007-2037	\$34
Total Estimated 2014 Revenue		\$4,689

¹ Article XIII B of the State Constitution provides the authority and requirements for the imposition of local sales tax measures subject to voter approval.

² Napa will impose a one-half of one percent transactions and use tax for 25 years (Measure T). This tax will fund local street and road improvements and will be implemented once the Flood Protection tax (Measure A) expires. Measure A is expected to expire by 2018.

Sales Tax Measure Data - Economic Analysis Branch - Division of Transportation Planning:
Katie Benouer, Chief (916) 653-1818

Financial Information, Expenditures¹ (in Billions)

FY 2015-16 Budget	Proposed		Enacted	
State Funds	\$4.199	40.0%	\$3.967	37.8%
Federal Expenditure Authority	\$4.627	44.1%	\$4.845	46.2%
Reimbursements	\$1.595	15.2%	\$1.595	15.2%
Traffic Congestion Relief Fund	\$0.081	0.8%	\$0.081	0.8%
Total	\$10.502	100.0%	\$10,488	100.0%

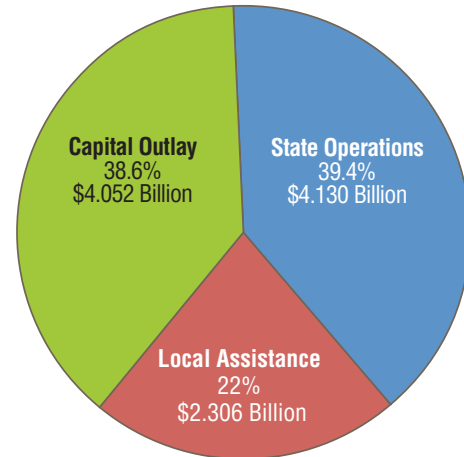
Category Of Expenditures	Proposed		Enacted	
State Operations	\$4.144	39.5%	\$4.130	39.4%
Local Assistance	\$2.306	22.0%	\$2.306	22.0%
Capital Outlay	\$4.052	38.6%	\$4.052	38.6%
Total	\$10.502	100.0%	\$10.488	100.0%

¹ Totals may not equal sum of components due to independent rounding.

Financial Information - Division of Budgets: Steven Keck, Chief (916) 654-4556

2015-16 Enacted Transportation Budget Expenditures

\$10.5 Billion



- State Operations
- Local Assistance
- Capital Outlay

Financial Data - Division of Budgets: Steven Keck, Chief (916) 654-4556

Allocations By Element

FY 2014-15 (in Thousands)

Program	Capital Outlay	Local Assistance	Mass Transit	Rail	Total Allocation
State Transportation Improvement Program (STIP) ¹	\$308,461	\$61,043	\$115,971	\$12,756	\$498,231
State Highway Operation and Protection Program (SHOPP) Augmentation Feb 5	\$3,409	\$0	\$0	\$0	\$3,409
Proposition 1B²					
Corridor Mobility Improvement Account (CMIA)	\$0	\$0	\$0	\$0	\$0
Route 99 Bond	0	\$0	\$0	\$0	0
State-Local Partnership Program (SLPP)	\$0	\$0	\$0	\$0	\$0
Trade Corridor Improvement Fund (TCIF) ³	\$25,500	\$1,700	0	\$16,600	\$43,800
Traffic Light Synchronization Program (TLSP)	\$0	\$13,540	\$0	\$0	\$13,540
Intercity Rail Improvement	\$0	\$0	\$0	\$108,000	\$108,000
Local Bridge Seismic Retrofit Program (LBSRP)	\$0	\$7,020	\$0	\$0	\$7,020
Public Transit Modernization Improvement, and Service Enhancement Account (PTMISEA) ⁴	\$0	\$0	\$654,285	\$0	\$654,285
Highway-Railroad Crossing Safety Account (HRCSA)	\$0	(\$3,023)	\$0	\$0	(\$3,023)
Proposition 1B Total	\$25,500	\$19,240	\$654,285	\$124,600	\$823,620

¹ Includes Proposition 1B STIP Augmentation allocations.

² Includes de-allocation that were a result of contract award savings.

³ Capital Outlay amount includes SHOPP/TCIF.

⁴ Source: Division of Rail and Mass Transportation Program Managers

All Proposition 1B data Except PTMISEA - Division of Transportation
 Programming: Bruce DeTerra, Chief (916) 654-4013

PTMISEA Data - Division of Rail and Mass Transportation:
 Bruce Roberts, Chief (916) 654-7293

Proposition 1B Program

Transportation Bond Act - As of June 30, 2015 (in Thousands)

Program	Available	Committed ¹	Balance
Caltrans (Dollars in Thousands)			
Corridor Mobility Improvement Account (CMIA)	\$4,500,000	\$4,449,618	\$382
Route 99 Corridor Account (Rte 99)	\$1,000,000	\$972,967	\$27,033
Trade Corridors Improvement Fund (TCIF)	\$2,000,000	\$1,973,238	\$26,762
State Transportation Improvement Program (STIP)	\$2,000,000	\$1,935,354	\$64,646
State Highway Operation and Protection Program (SHOPP)	\$500,000	\$500,000	\$0
Traffic Light Synchronization Program (TLSP)	\$250,000	\$250,000	\$0
State-Local Partnership Program (SLPP)	\$1,000,000	\$1,000,000	\$0
Local Bridge Seismic Retrofit Account (LBSRA)	\$125,000	\$125,000	\$0
Highway-Railroad Crossing Safety Account (HRCSA)	\$250,000	\$248,470	\$1,530
Intercity Rail Improvement (IRI)	\$400,000	\$400,000	\$0
Public Transportation Modernization, Improvement, and Service Enhancement Account (PTMISEA-Local Transit)	\$3,600,000	\$3,444,368	\$155,632
Caltrans Total	\$15,625,000	\$15,299,015	\$275,985
Non-Caltrans Dollars			
Local Street and Road, Congestion Relief, and Traffic Safety Account	\$2,000,000	\$2,000,000	\$0
Goods Movement Emission Reduction Program	\$1,000,000	\$1,000,000	\$0
School Bus Retrofit and Replacement Account	\$200,000	\$200,000	\$0
Port, Harbor, and Ferry Terminal Security Account	\$100,000	\$100,000	\$0
Transit System Safety, Security & Disaster Response Account	\$1,000,000	\$749,260	\$250,740
Non-Caltrans Total	\$4,300,000	\$4,049,260	\$250,740
Proposition 1B Total	\$19,925,000	\$19,348,275	\$526,725

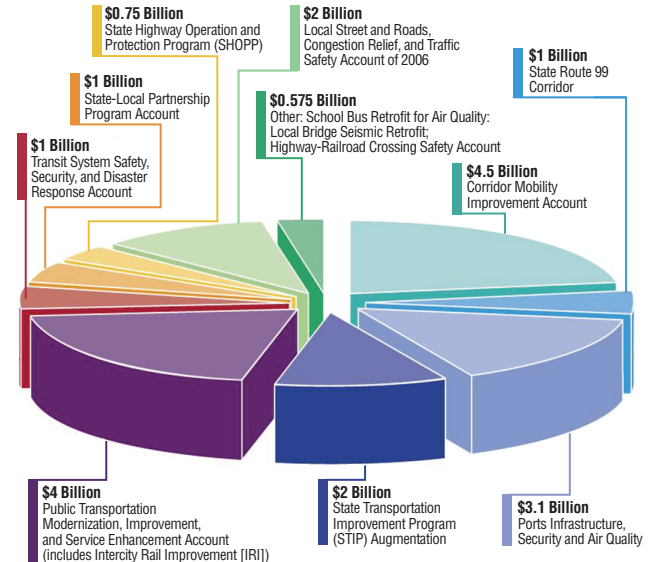
¹ Total amounts programmed through June 30, 2015, including the two percent reserve for bond administration costs, except for Local Transit, which is the amount of funding awarded to local agencies as of that date, plus anticipated administrative costs.

Financial Data - Division of Budgets: Steven Keck, Chief (916) 654-4556

Proposition 1B

Transportation Bond Act

As approved by the voters in the November 2006 general elections, Proposition 1B enacts the Highway Safety, Traffic Reduction, Air Quality, and Port Security Bond Act of 2006 to authorize \$19.925 billion of state general obligation bonds for specified purposes, including high-priority transportation corridor improvements, State Route 99 corridor enhancements, trade infrastructure and port security projects, school bus retrofit and replacement purposes, state transportation improvement program augmentation, transit and passenger rail improvements, state-local partnership transportation projects, transit security projects, local bridge seismic retrofit projects, highway-railroad grade separation and crossing improvement projects, state highway safety and rehabilitation projects, and local street and road improvement, congestion relief, and traffic safety.



Financial Data - Division of Budgets: Steven Keck, Chief (916) 654-4556

Selected Maintenance Costs

FY 2014-15 Actual Expenditures and Encumbrances (in Millions)

Annual Maintenance and Repair of Bridges	\$169.9
Non-Landscaped Weed Control	\$24.6
Maintenance of Landscaped Property (28,330 irrigated, 3,062 non-irrigated landscape acres)	\$62.9
Litter and Debris Removal	\$72.9
Safety Roadside Maintenance and Cleanup (87 Roadside Rests Statewide)	\$15.6
Highway Lighting ¹ (80,122 luminaires)	\$27.0
Highway Signalized Intersections ¹ (4,770 total highway signalized intersections)	\$14.5
Lane Striping (81,115 linear miles)	\$10.4

¹Maintenance and power costs included, cost does not include utility bills paid directly by Locals.

General Maintenance¹

FY 2014-15 Actual Expenditures and Encumbrances (in Millions)

Roadbed (HM 1)	\$347.4	29%
Roadside (HM 2)	\$325.4	27%
Bridges/Structures (HM 3)	\$169.9	14%
Traffic Guidance and Electrical (HM 4)	\$125.1	11%
Facility and Auxiliary Services (HM 5)	\$163.2	14%
Snow and Storm Control (HM 6)	\$36.6	3%
Radio (HM 7)	\$27.6	2%
Total	\$1,195.2	100%

¹ Includes: Highway Maintenance (HM) contracts, and State forces for Personal Services (PS) and Operating Expenses (OE).

Maintenance Data - Division of Maintenance: Tony Tavares, Chief (916) 654-5849

Adopt-A-Highway Program as of July 31, 2015

Volunteer Adoptions	2,200
Sponsored Adoptions	707
Suspended Permits (still active, under construction, etc.)	54
Total Adoptions	2,961
Litter Removal Groups	2,008
Graffiti Removal Groups	30
Wildflower Groups	11
Tree Planting Groups	38
Vegetation Management Groups	113
Estimated Shoulder Miles Adopted for Litter Removal	9,475
Amount of Litter Collected (cubic yards) in FY 2014-15	13,361
Estimated Acreage for:	
Wildflower	33
Vegetation Management	565
Tree Planting	114
Estimated Participants	12,810
Estimated Value of Litter Collection to the State	\$19.95 Million

Adopt-A-Highway Data - Division of Maintenance: Tony Tavares, Chief (916) 654-5849

Roadside

Vista Points ¹	146
Roadside Rest Areas ²	87

¹ Park and Rides and Vista Points are "location types" not adoption types, therefore they are not tracked separately. For example, a litter removal adoption may be located at a park and ride.

² Adoptions are not permitted at rest areas.

Roadside Data - Division of Design: Tim Craggs, Chief (916) 654-3858

Seismic Retrofit Program As of December 31, 2015

Bridge Type	Total Number	Completed	Percent Complete
State Owned	2,194	2,194	100%
Toll	11 ¹	10 ²	99%
Local	1,242	1065 ³	86%

¹ Coronado and Vincent Thomas Bridges are in the program but are no longer tolled.

² The East span of the San Francisco-Oakland Bay Bridge is now open to traffic but remains under construction, including completion of ramps and demolition of the old span.

³ Bay Area Rapid Transit (BART) requested removal of bridges from the Local Bridge Seismic Retrofit Program to be completed by BART.

State Data - Division of Project Management: James Davis, Chief (916) 654-2494

Local Data - Division of Local Assistance: Rihui (Ray) Zhang, Chief (916) 653-1776

Toll Data - Dan McElhinney, Chief Deputy District Director Caltrans District 4 - (510) 220-0738 (cell)

Highway Maintenance Pavement Costs FY 2013-14

SHOPP Pavement.....\$833 Million
Annual Pavement Maintenance Expenditure.....\$231 Million
(Support not included.)

Pavement Condition Percent of Distressed Lane Miles

Year	% of Distressed
2015	16%
2014	Not Available
2013	16%
2012	15%
2011	25%
2008-10	Not Available
2007	26%
2006	27%
2005	28%

Pavement Cost and Condition Data - Division of Maintenance:
Tony Tavares, Chief (916) 654-5849

Equipment

In-service Fleet Count by Category - February 3, 2016

Equipment Category	Number of Units
Passenger Vehicles	1,830
Light Commercial	1,928
Light Duty Utility Vehicles	1,544
Light Duty Trucks	1,704
Medium Duty Trucks	1,287
Heavy Duty Trucks	545
Road Maintenance Equipment	950
Landscape Maintenance Equipment	339
Construction Equipment	609
Snow Equipment	212
Industrial Equipment	263
Trailers	655
Other (Boats, Chain Control Campers, Barrier Machines)	29
Total	11,895

Other Equipment Statistics

Number of Main Shops 13
Number of Sub-Shops 13
Number of Home Storage Permits
Allocated to Caltrans..... 421

Equipment Data - Division of Equipment: Larry Orcutt, Chief (916) 227-9600

Transportation Management Systems (TMS)

as of January 2016 (unless otherwise noted)

Closed Circuit Cameras.....	2,333
Changeable Message Signs	834
Extinguishable Message Signs.....	563
Highway Advisory Radios.....	182
Roadside Weather Information Stations (RWIS)	142
Ramp Meters.....	2,802
Traffic Signals (State Owned)	6,247
Freeway Vehicle Detection Stations.....	16,819
Mainline	8,930
HOV (Carpool)	2,044
On-Ramps.....	2,950
Off-Ramps	2,174
Fwy to Fwy Connectors.....	506
Collector/Distributor	58
TMS Uptime (Non-detection) [December 2015]...	88.2%
TMS Detection Health	64.9%
Traffic Management Centers.....	13
24/7 Operation (with CHP Call Centers)	
[Located in Districts 3, 7, 8, 11, and 12]	5
24/7 Operation (not with CHP Call Centers)	
[Located in Districts 4,6,10, and 3 (Kingvale) seasonally]	4
16 hrs Operation (Mon-Fri / on-call weekends)	
[Located in Districts 1, 2, 5, and 9]	4

Traveler Services

as of December 2015 (unless otherwise noted)

QuickMap Web Visits	2,639,816
Freeway Service Patrol - Fiscal Year 2014-15	
Disabled Vehicle Assists.....	661,785
Centerline Lane Miles Served	1,808
Days Safety Campaigns Posted on	
Changeable Message Signs	130

Managed Facilities

as of July 2015 (unless otherwise noted)

Park and Ride Lots ¹ (January 2016)	322
HOV (Carpool) Lanes [in lane miles]	
In Operation.....	1,477
Under Construction	112
Proposed.....	776
HOV (Carpool) Lane Vehicle Access ² (December 2015)	
Registered White Clean Air Vehicle Stickers.....	94,760
Registered Green Clean Air Vehicle Stickers.....	85,000
Express Lanes ³ (in lane miles)	
In Operation.....	224
Under Construction	50
Proposed.....	1,298

¹ Includes State-owned lots, privately owned lots, and lots operating under a cooperative agreement with other agencies.

² HOV Lane Vehicle Access Data is obtained from Department of Motor Vehicles (DMV)

³ An Express Lane or High Occupancy Toll (HOT) Lane is a High Occupancy Vehicle (HOV or carpool) lane in which motorist may drive alone if they pay a toll.

Traffic Congestion

as of December 2015

Annual Vehicle Hours of Delay¹..... 123 Million

Traffic Census

as of January 2016

Total Count Sites in Traffic Census Network.....2,953

Continuous Weigh-In-Motion (WIM) Stations² 134

Permits

as of December 2015

Encroachment Permits Issued (FY 2014-15).....11,594

Permitted Outdoor Advertising (Displays)³8,831

Commercial Vehicle Services

FY 2014-15

Oversize/Overweight Permits Issued⁴147,588

Commercial Vehicle Enforcement Facilities 54

¹ Congestion is measured on urban freeways when speeds are less than 35 mph.

² WIM Stations include pre-pass and by-pass.

³ Includes all types of permitted displays.

⁴ Includes all types of transportation permits.

Traffic Congestion, Traffic Census, Permits, and Commercial Vehicle Services Data -
Division of Traffic Operations: Thomas Hallenbeck, Chief (916) 654-2352

Statewide Collisions in Construction/Repair Zones on California State Highways¹

Year	Collisions			Number of Fatalities	Number of Injuries
	Total	Fatal	Injury		
2013	5,874	47	1,822	51	2,745
2012	4,940	44	1,592	47	2,439
2011	4,005	37	1,313	42	2,079
2010	3,050	30	1,014	40	1,583
2009	3,813	37	1,180	48	1,836
2008	4,374	43	1,364	45	2,062
2007	5,163	42	1,553	47	2,339
2006	5,606	60	1,741	77	2,742
2005	4,586	45	1,462	67	2,322
2004	4,094	29	1,369	35	2,166
2003	4,564	40	1,456	51	2,482
2002	5,110	36	1,518	39	2,500
2001	4,898	40	1,480	48	2,379
2000	5,359	41	1,612	47	2,708
1999 ²	6,436	45	1,886	54	3,148
1998	6,901	44	2,140	54	3,537
1997	5,755	39	1,936	51	3,230
1996	6,075	53	1,960	63	3,119
1995	6,384	46	2,034	62	3,338

¹ Numbers represent collisions on state highway facilities where the roadway condition identified by the reporting officer was 'Construction/Repair Zone' and not necessarily occurring within the coned area of a construction/repair zone. The most recent full year of data is 2013.

² 1999 Slow For The Cone Zone Campaign implemented.

Collision Data in Construction Zones - Traffic Accident Surveillance and Analysis System (TASAS) Data - Division of Research, Innovation, and System Information:
Jim Appleton, Chief (916) 654-8877

Collision Data on California State Highways

Year	Collisions			Number of		Fatality Rate (Per 100 MVM ¹)
	Total	Fatal	Injury	Fatalities	Injuries	
2013	150,821	1,105	51,378	1,214	75,070	0.67
2012	146,581	1,083	50,667	1,210	73,745	0.67
2011	142,310	1,060	47,686	1,167	69,834	0.66
2010	145,685	1,009	48,474	1,121	70,701	0.64
2009	142,221	1,159	47,673	1,303	69,964	0.74
2008	149,225	1,288	49,827	1,429	72,770	0.81
2007	169,807	1,497	55,884	1,713	82,614	0.94
2006	177,839	1,628	57,269	1,841	85,972	1.01
2005	182,714	1,694	59,856	2,006	90,963	1.10
2004	182,509	1,609	60,042	1,841	92,330	1.02
2003	179,172	1,616	58,240	1,892	90,801	1.08
2002	176,882	1,592	56,521	1,873	89,348	1.09
2001	174,882	1,544	56,957	1,770	90,374	1.05

¹MVM = Million Vehicle Miles

Source: Collision Data Annual Publication.

Collision Data on State Highways - TASCAS Data - Division of Research, Innovation, and System Information: Jim Appleton, Chief (916) 654-8877

Traffic Safety Projects & Safety Investigations FY 2014-15

Number of Safety Projects 57
 Safety Projects Cost..... \$187.7 Million
 Safety Investigations..... Approximately 2,800

Traffic Safety Project Data - Division of Traffic Operations:
 Thomas Hallenbeck, Chief (916) 654-2352

Asset Delivery¹ Fiscal Year 2014-15

Mobility	
HOV Lanes (new lane miles)	65.59
Mixed Flow Lanes (new lane miles)	73.55
Operational Lanes (new lane miles)	13.22
New Structures (each)	17
Roadway Rehabilitation (lane miles)	2796.9
Structure Rehabilitation (each)	729
Transportation Management System (TMS) Elements Installed ²	214
Environmental	
Landscaping (acres)	325.18
Soundwall (linear miles)	8.29

Asset Definitions

HOV Lanes - Any lane designated for high occupancy vehicles that is added to the highway system.

Mixed Flow Lanes - Any highway lanes that are not HOV and that are added to the existing system.

Operational Lanes - Turnouts, passing lanes, truck climbing lanes.

Structure - Underpass, Overhead, Bridge and Overhead, Viaduct, Bridge, Overcrossing, Undercrossing, Separation.

Roadway Rehabilitation - Restoration and major maintenance of roadway lanes and other pavement life extension work.

Structure Rehabilitation - Restoration and major maintenance of a structure, and other structure life extension work.

Landscaping - Planting that provides safety improvements, erosion control/storm water pollution prevention, highway revegetation, and required mitigation planting

Soundwall - Typically reinforced concrete with a height of 8 to 16 feet depending on design needs.

TMS Elements Installed - Field elements used in the management and operation of the transportation system including: closed-circuit televisions, changeable message signs, extinguishable message signs, highway advisory radios, roadside weather information stations, ramp meters, vehicle detection, or signals.

¹ All data, except the TMS Elements Installed, is based on the estimated Construction Completion Acceptance date, and is collected as part of the Project Plans, Specifications, and Estimate (PS&E) submittal process in the Office Engineer, Division of Engineering Services.

² TMS Elements vary with items installed each year; this category is reported as one.

Asset Delivery and Asset Definitions - Division of Research, Innovation, and System Information:
 Jim Appleton, Chief (916) 654-8877

TMS Elements Installed Data and Definition - Division of Traffic Operations:
 Thomas Hallenbeck, Chief (916) 654-2352

Appendix

Appendix	48-53
Caltrans Fact Booklet	
Frequently Asked Questions	49
Web Resources	50-51
Caltrans District Offices and District Directors ...	52-53

Caltrans Fact Booklet Frequently Asked Questions

Is the Caltrans Fact Booklet (CFB) available online?

The CFB is available on our internal website at:

<http://onramp.dot.ca.gov/docs/CaltransFactBooklet.pdf>

The booklet is available on the internet at:

http://www.dot.ca.gov/hq/tsip/data_library/CFB/2016_CFB.pdf

What years are reported in the CFB?

Each division or program reports the latest data they have available. Data are reported using California (State) Fiscal Years or calendar years if years are noted singularly. If Federal Fiscal years are used, this is noted on the table as FFY.

What is the current production schedule for the CFB?

The CFB is scheduled to be produced approximately the fifth month of the calendar year.

Who maintains final production approval?

Caltrans Division of Public Affairs

Who is in charge of compilation and production of the CFB?

Division of Research, Innovation, and System Information:

Jim Appleton, Chief (916) 654-8877

Contacts:

Paulette Lautaret(916) 657-4726

paulette.lautaret@dot.ca.gov

Jahangir Kashkooli(916) 654-8170

jahangir.kashkooli@dot.ca.gov

Web Resources

Caltrans' Internet Home: External Caltrans site
www.dot.ca.gov

Caltrans' Intranet Home: Internal Caltrans site
onramp.dot.ca.gov

Accounting: CT Travel Guide/Vendor Pmts/EFT/
www.dot.ca.gov/hq/asc/index.htm

Active Transportation Program (ATP)
www.dot.ca.gov/hq/LocalPrograms/atp/

Adopt-A-Hwy Program: Organizations help maintain sections
adopt-a-highway.dot.ca.gov

Advertised Projects: Projects for bid
www.dot.ca.gov/hq/esc/oe/weekly_ads/index.php

Alternative Fuels Locator: US Dept of Energy
www.afdc.energy.gov/locator/stations/

Amtrak California: Timetables/Stations/Routes/Deals
www.amtrak.com/home/

Aviation Planning/Engineering/Permits/Grants
www.dot.ca.gov/hq/planning/aeronaut/

CA Transportation Commission: Hwy/Passenger Rail/Transit
Improvements in CA - www.cattc.ca.gov

California Road System (CRS) Maps
www.dot.ca.gov/hq/tsip/hseb/crs_maps/

California Transportation Plan (CTP)
www.dot.ca.gov/hq/tpp/californiatrnsportationplan2040/index.shtml

Caltrans Construction Contract Standards
www.dot.ca.gov/hq/esc/oe/standards.php

Caltrans Earth Web-based Transportation Database
www.dot.ca.gov/hq/tsip/gis/caltrans_earth/overview.php

Caltrans Improvement Project
www.dot.ca.gov/CIP

Caltrans Local District Offices
www.dot.ca.gov/localoffice.htm

Caltrans Performance Measurement System (PeMS)
<http://pems.dot.ca.gov/>

Caltrans Projects
www.dot.ca.gov/projects.htm

Caltrans Statewide Press Releases
www.dot.ca.gov/hq/paffairs/news/pressrel/

Contract Awards Services
dot.ca.gov/hq/esc/oe/contract_awards_services.html

Environmental Analysis
www.dot.ca.gov/hq/env/

FAST Act/MAP-21
FAST Act FHWA - www.fhwa.dot.gov/fastact/
Office of the Federal Liaison - www.dot.ca.gov/fedliaison/aboutUs.shtm
Programming - www.dot.ca.gov/hq/transprog/map21/map21.htm

Live Traffic Cameras: State freeway roadside monitoring
video.dot.ca.gov

Local Assistance Program Information
www.dot.ca.gov/hq/LocalPrograms/programInformation.htm

Mile Marker: A Caltrans Performance Report
dot.ca.gov/ctjournal/MileMarker/index.html

National Highway System (NHS)
www.dot.ca.gov/hq/tsip/hseb/nhs.html

Public Mailing Lists - Send messages to members/subscribe
lists.dot.ca.gov/mailman/listinfo

QuickMap - Real-time Traffic Google Map
quickmap.dot.ca.gov

Standard Environmental Reference (SER)
Environmental document Procedures - www.dot.ca.gov/ser/

State Planning (CA Transp Plan, CA Interregional Blueprint)
www.dot.ca.gov/hq/tpp/offices/osp/index.html

Traffic Census-Traffic Volumes-Monthly Vehicle Miles of Travel
traffic-counts.dot.ca.gov

Work Zone Safety: "Slow for the Cone Zone" travel trips
www.dot.ca.gov/hq/maint/workzone/

Caltrans District Offices and District Directors

District 1 1656 Union St. Director:
Eureka, CA 95501 Charlie Fielder
(707) 445-6600 - TTY: 707-445-6600
www.dot.ca.gov/dist1/
district1.onramp.dot.ca.gov/ - internal

District 2 1657 Riverside Dr. Director:
Redding, CA 96001 Dave Moore
(530) 225-3426 - TTY: 530-225-2019
www.dot.ca.gov/dist2/
district2.onramp.dot.ca.gov/ - internal

District 3 703 B St. Director:
Marysville, CA 95901 Amarjeet S. Benipal
(530) 741-4211 - TTY: 530-741-4509
www.dot.ca.gov/dist3/
northregion.dot.ca.gov/ - N Region/Dist 3 internal

District 4 111 Grand Ave. Director:
Oakland, CA 94612 Bijan Sartipi
(510) 286-4444 - TTY: 510-286-4454
www.dot.ca.gov/dist4/
d4web.dot.ca.gov/ - internal

District 5 50 Higuera St. Director:
San Luis Obispo, CA 93401 Timothy M. Gubbins
(805) 549-3111 - TTY: 805-549-3259
www.dot.ca.gov/dist05/
wwwd5.dot.ca.gov/ - internal

District 6 1352 W. Olive Ave. Director:
Fresno, CA 93728 Sharri Bender Ehlert
(559) 488-2409 - TTY: 559-488-4066
www.dot.ca.gov/dist6/
d06web/ - internal

District 7 100 S. Main St., Ste. 100 Director:
Los Angeles, CA 90012 Carrie Bowen
(213) 897-3656 - TTY: 213-897-9797
www.dot.ca.gov/dist07/
t7www2/cmsms/ - internal

District 8 464 W. 4th St., 12th Floor Director:
San Bernardino, CA 92401 John Bulinski
(909) 383-4561 - TTY: 909-383-6300
www.dot.ca.gov/dist8/
district8.onramp.dot.ca.gov/ - internal

District 9 500 South Main St. Director:
Bishop, CA 93514 Brent Green
(760) 872-0601 - TTY: 760-872-9043
www.dot.ca.gov/dist9/
d09web/ - internal

District 10 1976 E. Martin Luther Director:
King Jr. Blvd. Dennis T. Agar
Stockton, CA 95205
(209) 948-7543 - TTY: 800-735-3922
www.dot.ca.gov/dist10/
district10.onramp.dot.ca.gov/ - internal

District 11 4050 Taylor St. Director:
San Diego, CA 92110 Laurie Berman
(619) 688-6699 - TTY: 619-688-6650 (or -8850)
www.dot.ca.gov/dist11/
onramp/dist11/main.php - internal

District 12 3337 Michelson Dr., Ste. 100 Director:
Irvine, CA 92612 Ryan Chamberlain
(949) 724-2000 - TTY: 949-756-7313
www.dot.ca.gov/dist12/
tcweb.dot.ca.gov/ - internal

Caltrans Districts and CA Counties



¹ The District 9 boundary changed on November 1, 2015 to include a part of Kern County in District 6. The official order was signed on October 30, 2015, encompassing all functions, and went into effect on November 1, 2015.

